



# Land North West

Fulbeck Grange







## Land North West, Fulbeck Grange, Morpeth, NE61 3GQ

This is a rare opportunity to purchase a delightful plot of land which stretches to approximately 0.247 acres, with outline planning permission granted and still in existence (14/00397/OUT) (17/00466/REM) for a single property.

The design of this 1.5 story residential dwelling consists of a substantial, detached home with three bedrooms, detached garage, on-site parking and gardens.

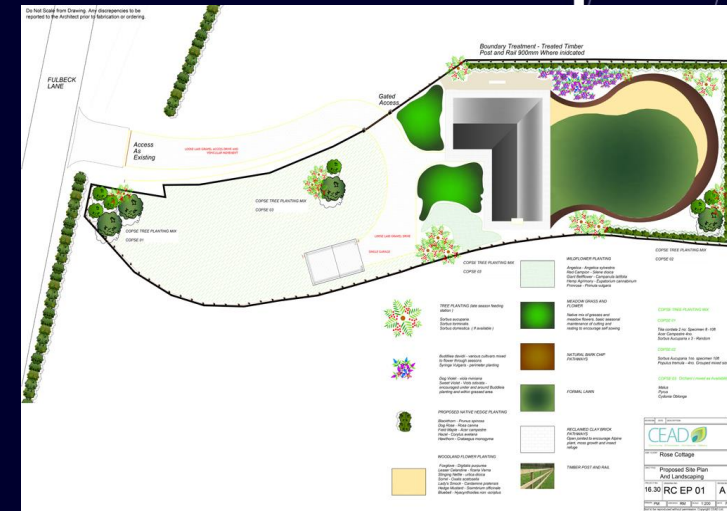
The plot is placed approximately one mile from the delightful market town of Morpeth with its shops, cafes, restaurants and excellent local schooling. It also offers close proximity to the A1 giving excellent access to Newcastle City Centre and throughout the region. The land is accessed just off Fulbeck Lane and enjoys lovely views over the surrounding fields.

The outline planning has been granted for a 188m<sup>2</sup> property with a further detached garage.

Any amendments to the plans will be subject to further detailed planning approval. Early inspections are strongly advised.

Mains electric, water and drainage, are close by but are not connected | Tenure: Freehold

Price Guide: Offers Over £250,000





# SANDERSON YOUNG

Regional Gosforth Office  
95 High Street | Gosforth  
Newcastle upon Tyne | NE3 4AA  
[gosforth@sandersonyoung.co.uk](mailto:gosforth@sandersonyoung.co.uk)  
0191 213 0033